

## GF4 Die Cast Lift-Off Hinge

### Features

- Improved appearance and greater security by use of concealed fixing studs, secured from inside
- Robust design, intended for large enclosure doors, and suitable for both interior or exterior use
- Hinge opens fully forward to 180°, and backward to 45° from horizontal
- Available in left-hand and right-hand versions

### Material

- Body: Zinc alloy die cast, black powder coated finish
- Pin: Stainless steel

### Product Performance

- Axial loading:
  - Maximum recommended: 15,360 N
  - Ultimate: 23,040 N
- Radial loading:
  - Maximum recommended: 6,940 N
  - Ultimate: 10,410 N

### Notes

- Fixing by two threaded studs M8 x 12mm, cast-in each leaf

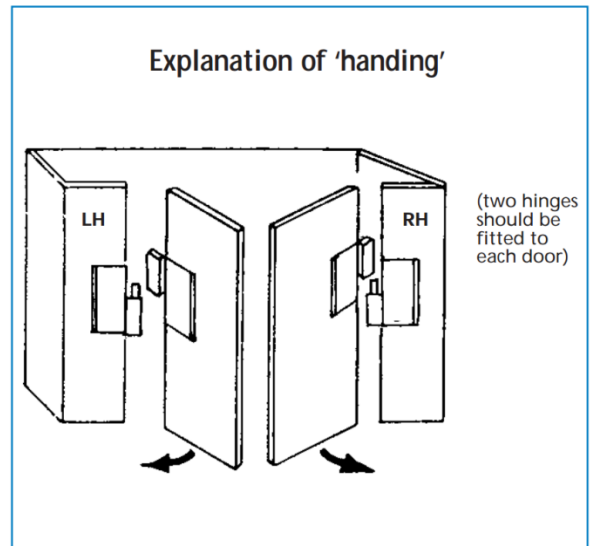
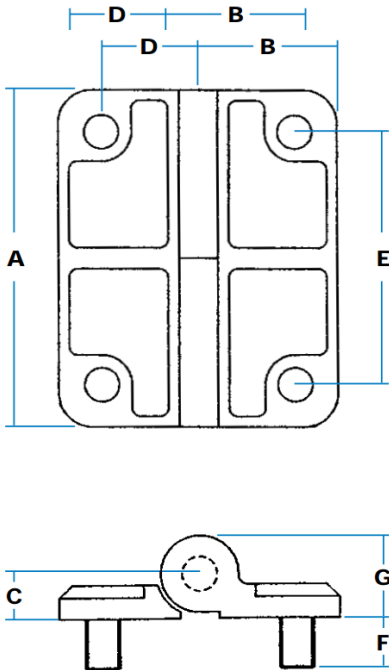


GF4-G01824  
(right-hand)



Left-hand

Right-hand



Part No.	Type	A	B	C	D	E	F	G	Pin Diameter
GF4-G01824	Right-hand	80	32.5	10.5	22.5	60	M8 x 15	19.5	8
GF4-G01825	Left-hand								